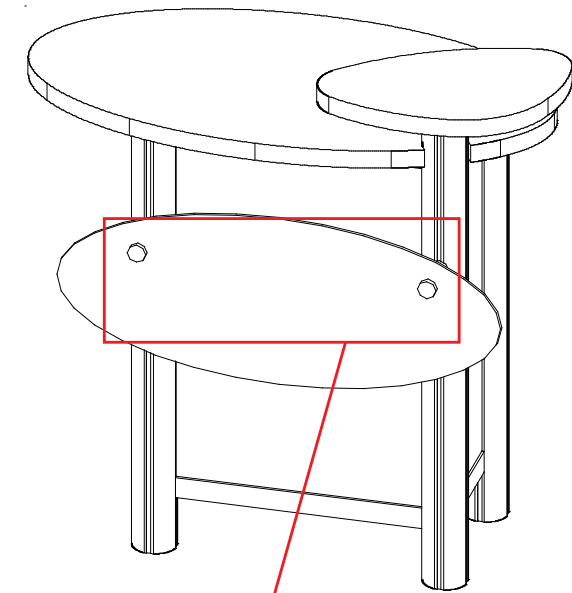


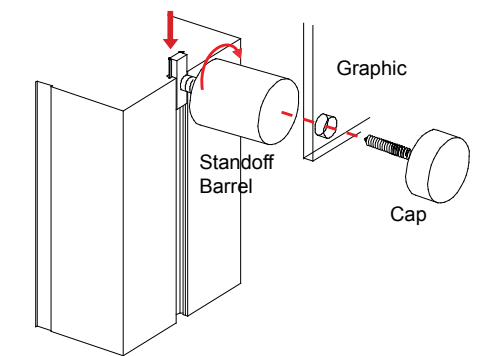
Item	Quantity	Description
12	1	38" RR91 Vertical Extrusion
13	1	38" RR91 Vertical Extrusion w/Door Stop
14	1	43" RR91 Vertical Extrusion
14A	1	Plate for Counter Connection
15	1	38" RR91 Vertical Extrusion w/Door Hinges
16	2	20" Z46 Horizontal Extrusion
17	2	8.5" Z46 Horizontal Extrusion
18	2	20" Z45 Horizontal Extrusion
19	2	8.5" Z45 Horizontal Extrusion
	4	Internal Shelf Support

Steps:

- 1) Connect horizontals [16 & 17] between verticals resting on top of stoppers at approximately 4" up from floor to bottom of metal.
- 2) Set floor in place on top of lip of horizontal extrusions.
- 3) Place infills in place as shown.
- 4) Connect horizontals [18 & 19] between verticals and atop inserts as shown.
- 5) Velcro shelf supports to inside of pedestal, then set internal shelf atop supports.
- 6) Hang door on hinges as shown in detail.
- 7) Place large counter top on top of assembled base.
- 8) Attach connector plate [14A] to vertical [14] then connect smaller counter to [14A].
- 9) Attach graphic to front of pedestal with standoffs as shown in detail.

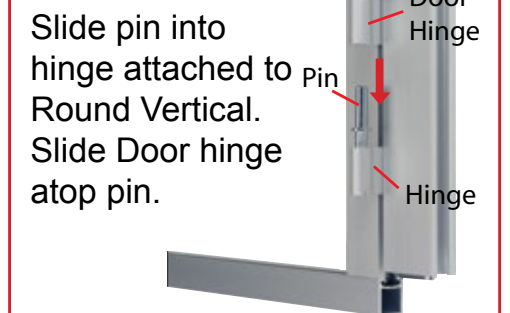


Graphic Attachment

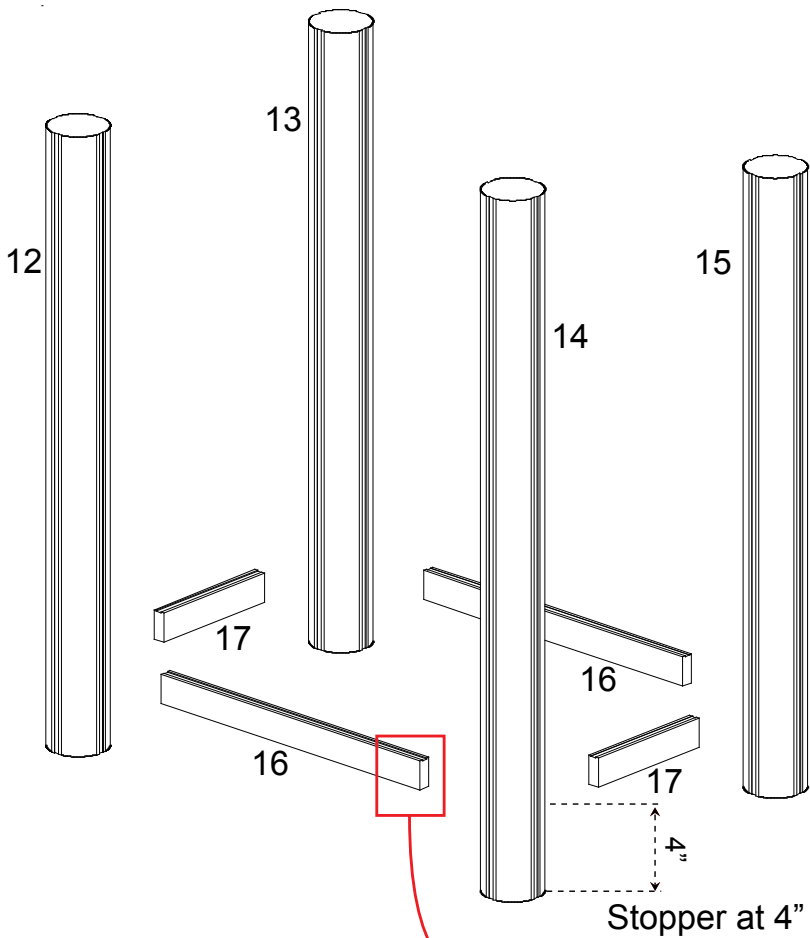


Slide connector on back of standoff barrels into groove of extrusion and twist to secure in place. Secure graphic to standoffs using screw caps.

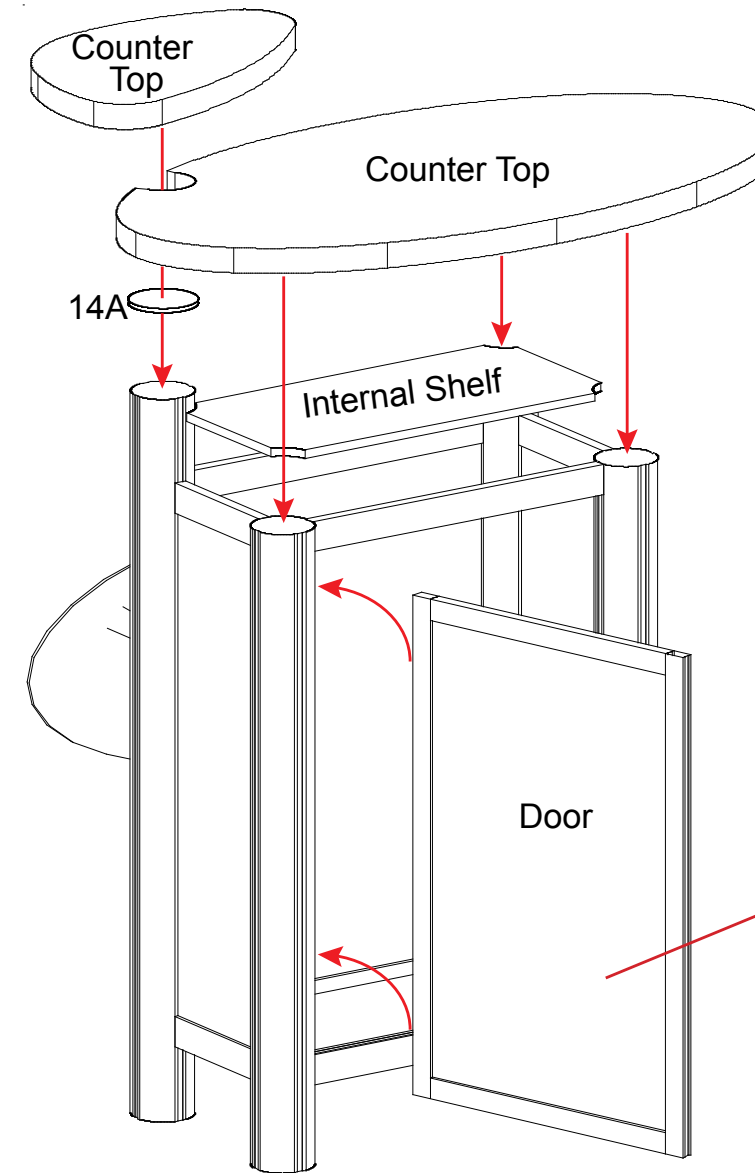
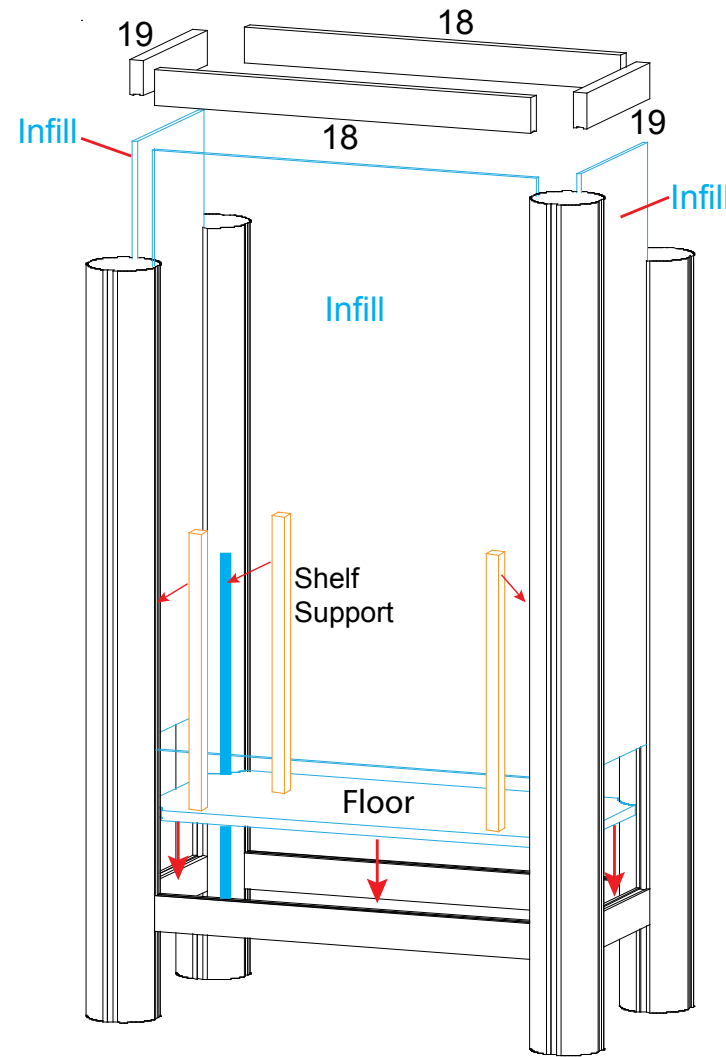
Door Attachment



Slide pin into hinge attached to Round Vertical. Slide Door hinge atop pin.



Extrusions 10 and 11 have a lip for the floor to rest upon.



General Setup Instructions

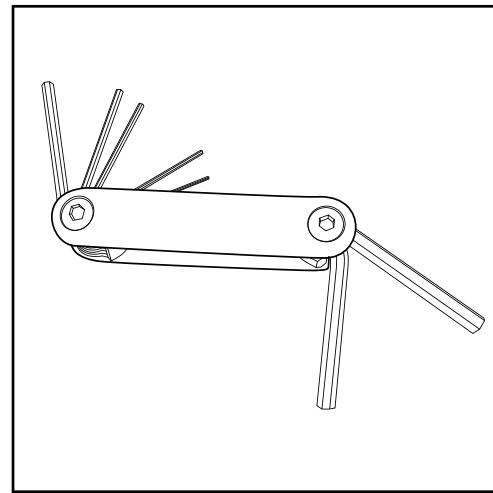
- Read entire setup instruction manual prior to unpacking parts and pieces.
- The setup instructions are created specifically for this configuration.
- Setup instructions are laid out sequentially in steps, including exploded views with detailed explanation for assembly.

Cleaning & Packing

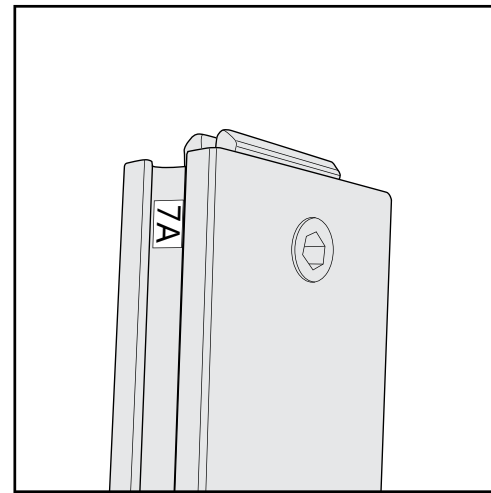
- For Cleaning Metal, Plex, & Laminate Parts: Use a **MILD NON-ABRASIVE** cleanser and soft cloth/paper towel to clean all surfaces.
- Keep exhibit components away from heat and prolonged sun exposure. **Heat and UV exposure will warp and fade components.**
- Retain all provided Packing Materials. All provided packing materials are for ease of repacking & component protection.

Disassembly

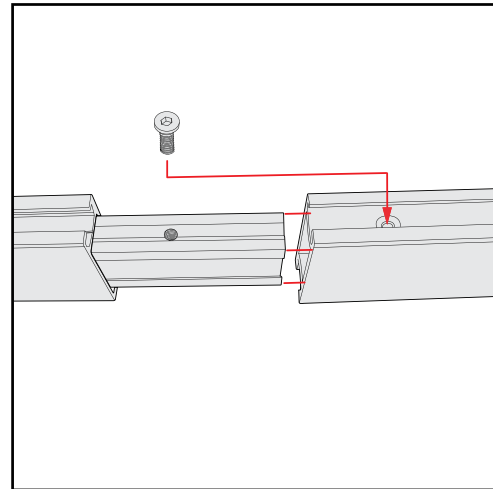
- For loss prevention, tighten all setscrews and locks during disassembly



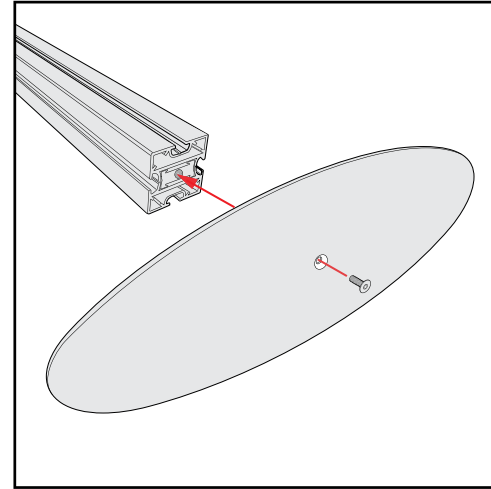
Hex Tool - Essential for Assembly



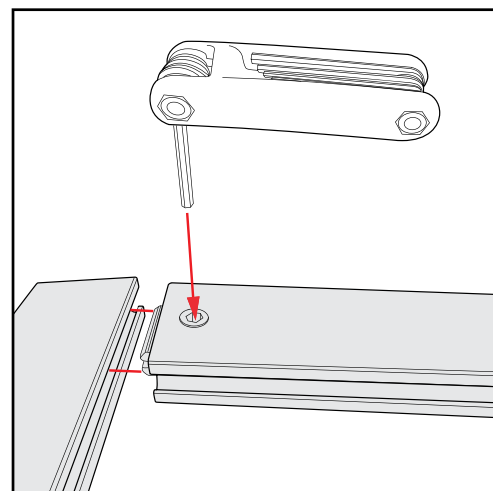
Part Identification - Numbering



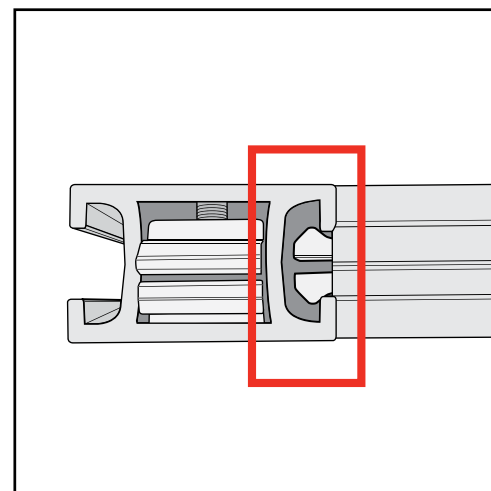
Spline Connection



Base Plate & Extrusion Connection



Extrusion & Lock Connection



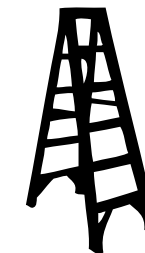
Engaged Lock



WARNING



DO NOT USE POWER TOOLS

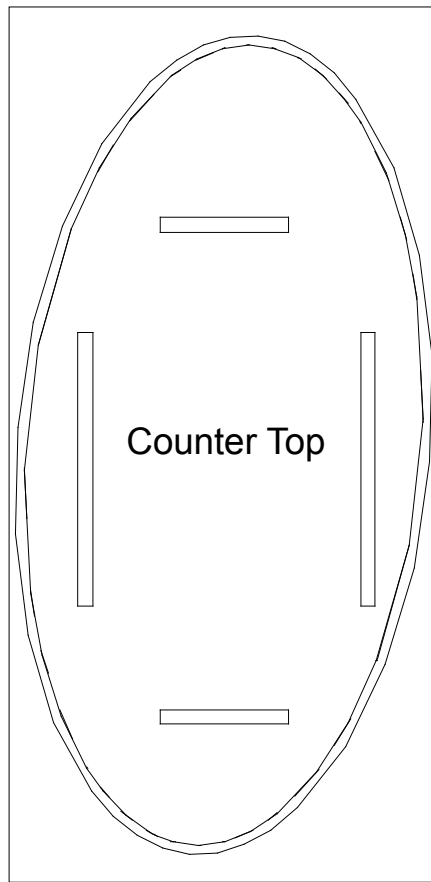


LADDERS OR LIFTS MAY BE REQUIRED

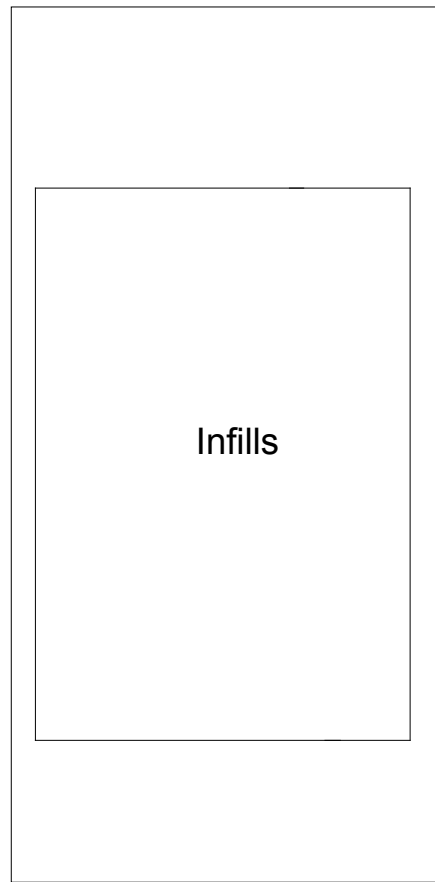


ALL CONNECTIONS MUST BE TIGHTLY SECURED

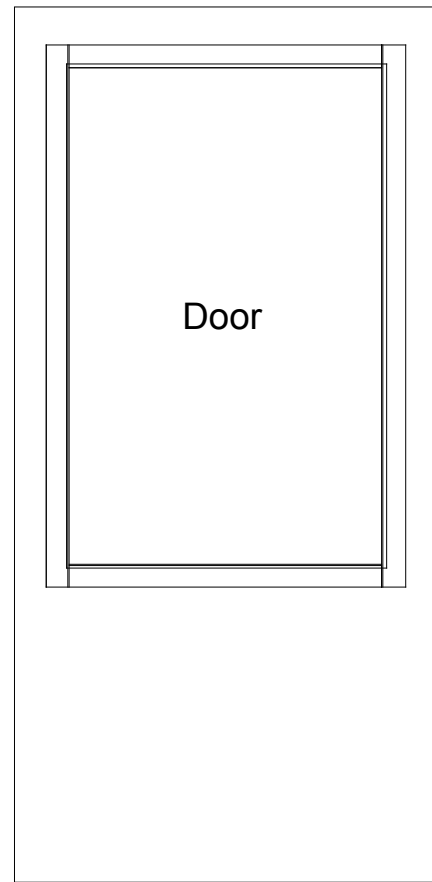
Top View



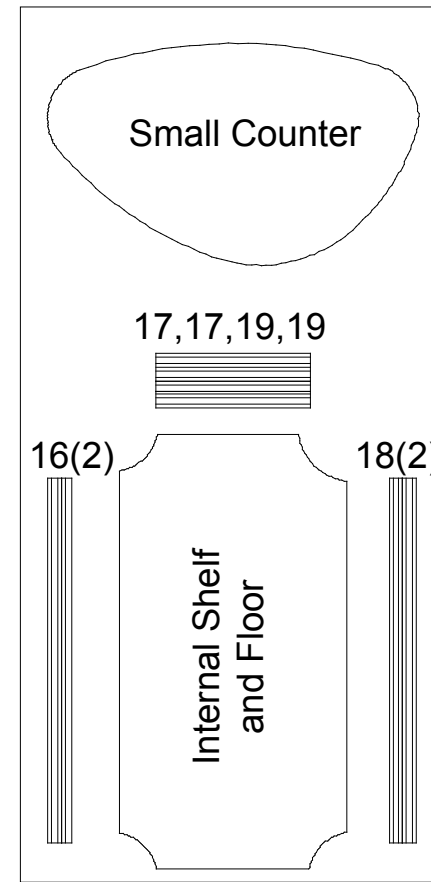
Level 1



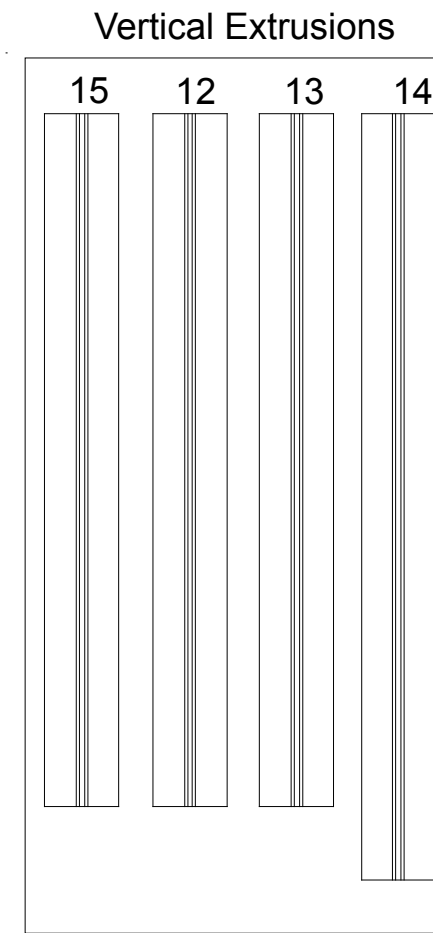
Level 2



Level 3



Level 4



Level 5

